

# PZ34 Series

## LINEAR MOTION POSITION SENSORS

Ø19 Section, STANDARD 10-250mm

### Pulling Rod Type



This mini position transducer is designed for direct absolute measurement and available in stroke length up to 250mm. The mini design is suitable for mounting in instruments or machines with limited space.

An improved technique for making connection to resistance track (Double Trimming Technique) ensures the higher degrees of reliability and linearity, while multi-fingers wipers stabilize output signals, even in the most adverse working conditions.

There are three ways of mountings to suit different applications

PZ34S can be mounted by two adjustable brackets.

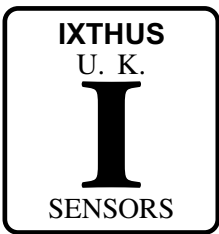
PZ34A can be mounted by self-aligning ball joints

PZ34F can be flange mounted

### Unique Features

- Mini design for limited space
- Anodised Aluminium Housing
- Very Long Life >100 x 10<sup>6</sup> Cycles  
>25 x 10<sup>6</sup> m
- Stroke : 10-250mm
- Outstanding Linearity : ±0.05%
- High Resolution : Infinite
- Excellent Repeatability up to : ± 0.01mm
- Max operating speed : 5m/s max.
- Three mounting methods
- PZ34S - two adjustable brackets
- PZ34A - two self-aligning ball joints
- PZ34F - flange mounted
- Sealing IP 60 standard (IP 65 optional)
- Fuse Protected optional
- Operating temperature : -30 ~100°C
- Storage Temperature : -50 ~120°C

Technical Specifications		
Sealing - PZ34S/PZ34A/PZ34F		IP60
Sealing - optional		IP65
Current	Resistance	≤ 10mA
	Wiper	≤ 1mA
Operating Force		≤ 0.5N (IP60) ≤ 5N (IP65)
Power Consumption		3W-10W
Output Smoothness		<± 0.1% against input voltage
Input Voltage		60 V Max
Insulation Voltage		500V-1 min Residue < 5 μA
Vibration	IEC 68-2-6:1982	10g
Shock	IEC 68-2-29:1968	40g

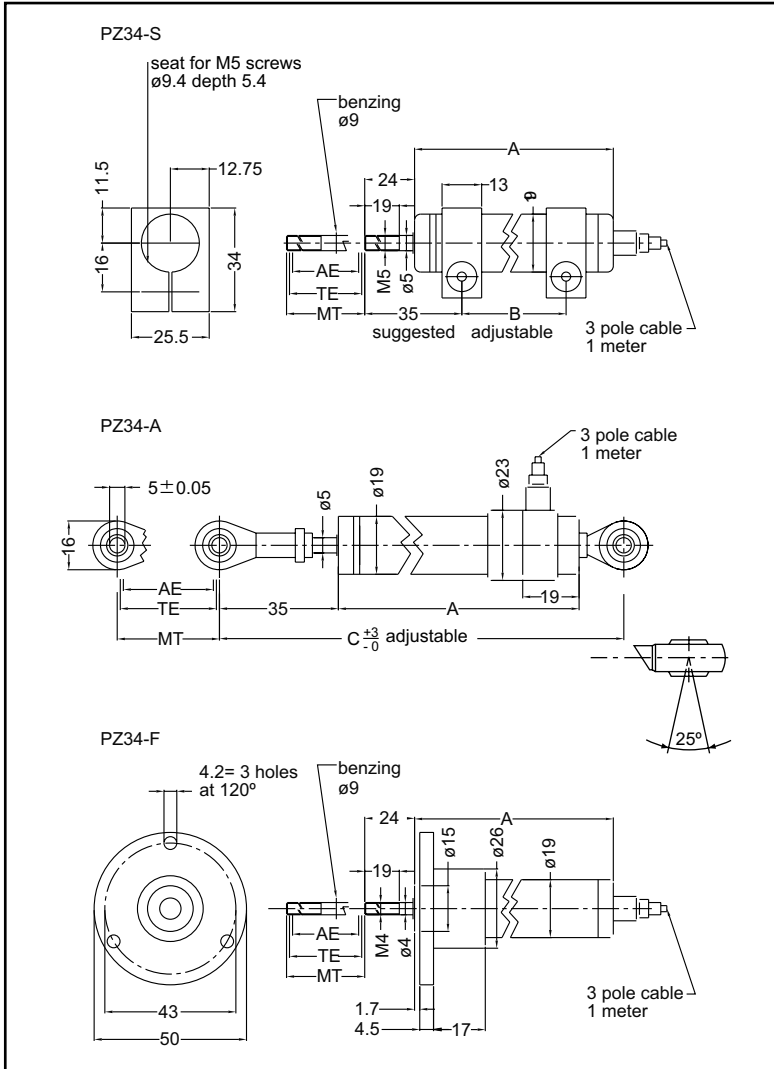


# PZ34 Series

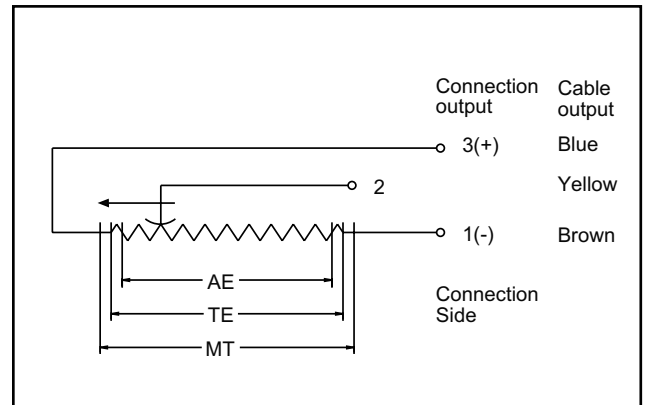
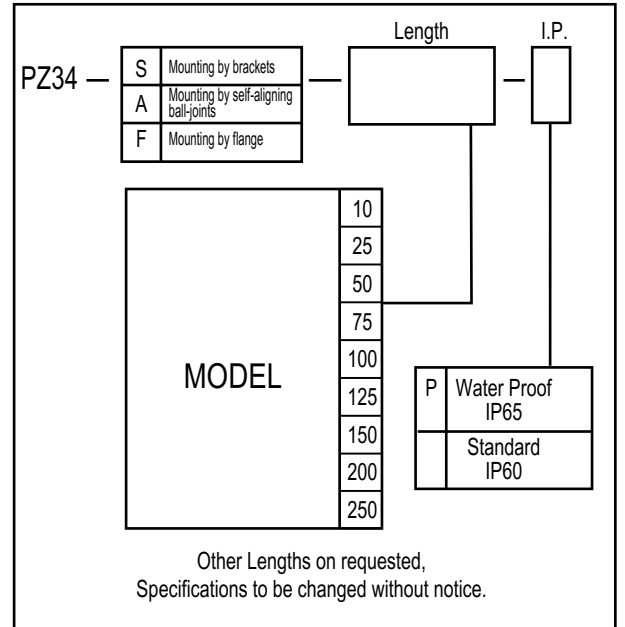
## LINEAR MOTION POSITION SENSORS

Ø19 Section, STANDARD 10-250mm

### ELECTRICAL CONNECTIONS



### ORDER CODE



PZ34 series		10	25	50	75	100	125	150	200	250
Total Electrical Travel(T.E)	mm	11	26	51	76	101	126	151	201	251
Active Electrical Travel (A.E)	mm	10	25	50	75	100	125	150	200	250
Resistance ±20%	kΩ	1	1	2	3	4	5	5	8	10
Independent Linearity	±%	0.3	0.2	0.1	0.1	0.1	0.05	0.05	0.05	0.05
Mechanical Travel (M.T)	mm	15	30	55	80	105	130	155	205	255
Resolution		infinite								
Recommended Cursor Current	μA	< 1								
Temperature Range	°C	-30 to +100								
Dimensions (A) PZ34-S	mm	68.5	83.5	108.5	133.5	158.5	183.5	208.5	258.5	308.5
Dimensions (A) PZ34-A	mm	95	110	135	160	185	210	235	285	335
Dimensions (A) PZ34-F	mm	68.5	83.5	108.5	133.5	158.5	183.5	208.5	258.5	308.5
Dimensions (B)	mm	32	47	72	97	122	147	172	222	272
Dimensions (C)	mm	148	163	188	213	238	263	288	338	388
Net Weight PZ34-S	gm	70	90	105	130	160	175	190	215	245
Net Weight PZ34-A	gm	90	110	125	150	180	195	210	235	260
Net Weight PZ34-F	gm	80	100	115	140	170	185	200	225	255

\* Dimensions for reference only